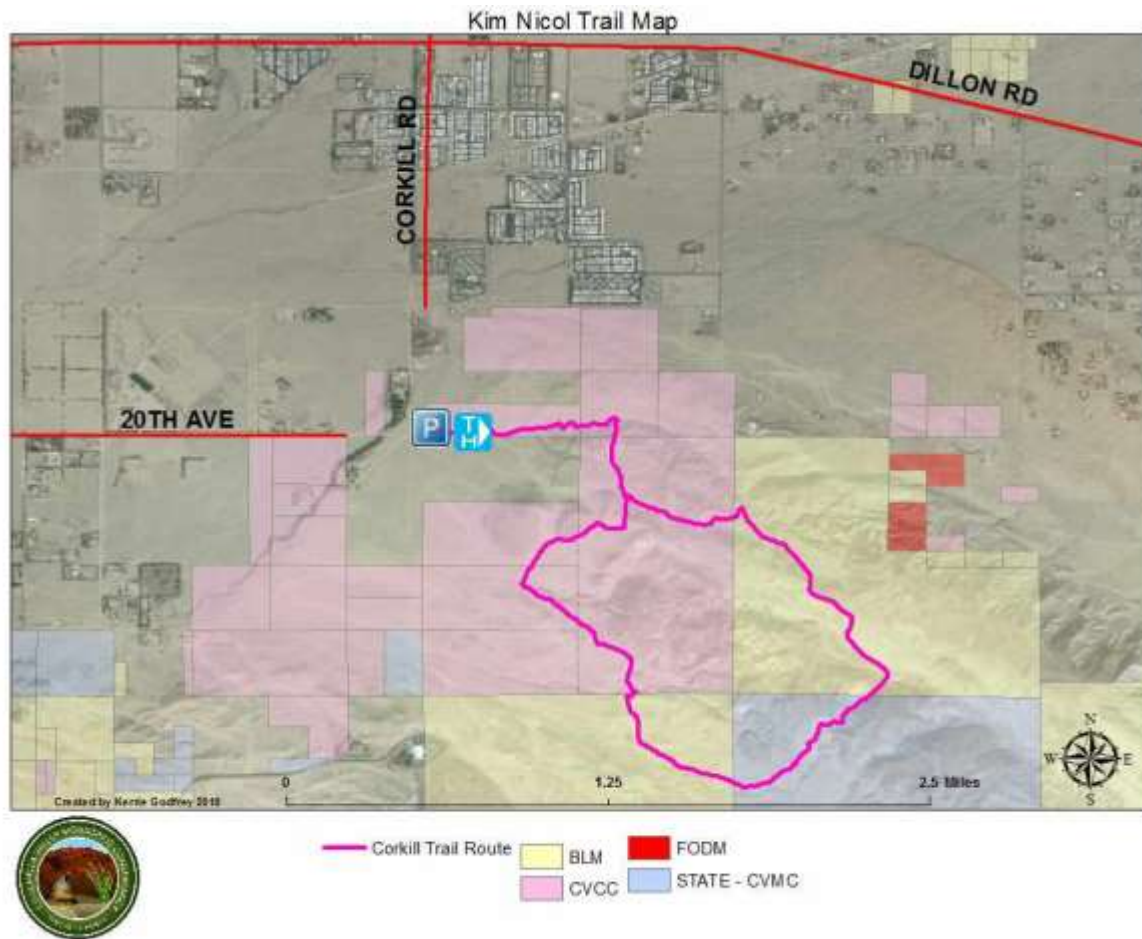


Kim Nicol Trail



Kim Nicol Trail Information:

The trail is a 5.6-mile loop of moderate difficulty traversing a variety of sandy and rocky terrain areas with mostly gradual height gains. It provides stunning views of the open desert and the surrounding hills, as well as the distant mountains ranges in all directions.


Directions: Take I-10 to the Palm Drive exit; go north on Palm to Dillon, turn right. Proceed about 3.5 miles to Corkill Rd. (there is a convenience store on the right hand side), and turn right. Go about a mile and a half and the trailhead will be on the left. If you get to 20th Avenue, you will have gone about two blocks too far.

Note: The pavement ends for the last half mile or so, and while it is dusty and a little bumpy, 4WD is not necessary. Access is also possible from 20th Avenue off of Mountain View Rd., but that road is narrow, bumpy and sandy and 4WD is strongly advised.

Permitted: Hikers, dogs, horses, and bikes are permitted, but motorized vehicles of any kind are prohibited. There are no shaded areas on the trail, so plan the timing of your visit accordingly, dress appropriately and bring plenty of sunscreen and water.

Contact: For further information, contact CVMC at (760) 776-5026 or the Friends of the Desert Mountains at (760) 568-9918.

Dedicated on March 9, 2018: Ceremony Pictures




Kim Nicol Trail Ribbon Cutting



Friday, March 9
Corkill Rd and 20th Ave, Desert Edge

You are invited to attend the grand opening of the first new recreational trail in the Coachella Valley in 10 years, a 6-mile loop showcasing conservation lands and honoring a woman who spent her life working to protect endangered species.



Opening Ceremony: 8:15 am
Inaugural Hike: 8:45 am



Call 760-776-5026 or 760-568-9918 for more information



**Friends of the
Desert Mountains**





Speaker at Dedication (Left to right): Tammy Martin (FODM ED), Jim Karpiak (CVMC ED), Doug Herrema (BLM), Shelley Kaplan (CVMC Chair & CC Councilman), Buford Crites (CVMC and FODM BD), Joanne Ohanesian (Greater Palm Springs CVB), Eddy Konno (CADFW, CVMC BD)



Awards from RC Supervisor's Office (Left to right): Katie Barrows (CVCC Dir of E Science), Shelley Kaplan (CVMC Chair & CC Councilman), Pat Cooper (RC Supervisor Staff), Jess Gonzalez (Kim Nicol's Spouse), Tammy Martin (FODM ED)



Presentation of the Awards from the Riverside County Supervisor's Office



The Unveiling of the Trailhead Sign



Views from the Trail